



Easy Fleece Hat Instructions



Materials Needed:

1 yard of fleece to make 7 1/2 hats*

Matching thread

Sharp Scissors

Measuring tape

Cloth marker, chalk, or Fine Tip Sharpie for marking your fleece

*Please feel free to have some fun with your color choices but do not buy solid neon colors or solid white. Please avoid overly feminine prints ie: flowers and paisley, and prints specifically designed for children.

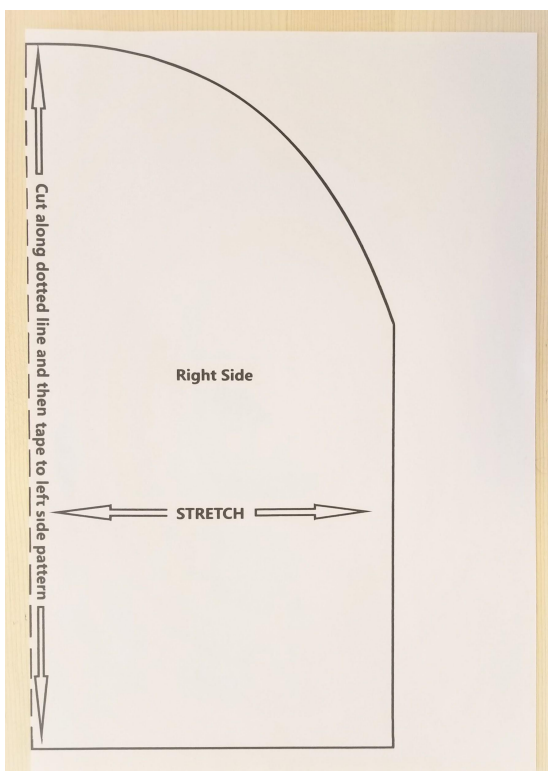
This video will teach you step by step how to make your hat. It is filled with tips and tricks on how to lay out your fabric, how to lay out your pattern to avoid waste, how to find the “stretch”, how to cut 2 blanks at a time, how to tell which is the “correct side” and wrong” side, and so much more!

https://www.youtube.com/watch?v=gLPSu9vZiW0&list=PLU42hTiNaRsatOq5fe4R_zK3vgg-9M1ta&index=1&t=299s

1. **[Print Pattern](#)** as you normally would. The pattern should fit on 2 pages and not overlap the page. If it prints too large, set your printer to “fit to page” and reprint or the pattern will be incomplete.

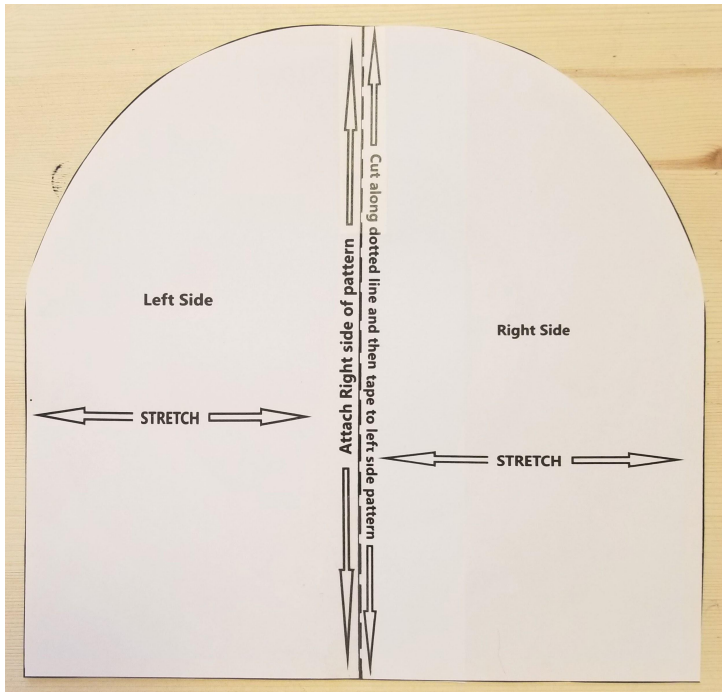
Tip: The pattern should measure approximately 11” across the bottom. If it is larger or smaller, the pattern is not the correct size and needs to be reprinted using the above instructions.

2. Trim the “right side” pattern along the dotted line.



3. Attach the right side of the pattern to the left side of the pattern by lining up the top and bottom lines, and tape the pattern together. Cut out the pattern along the solid outside lines.

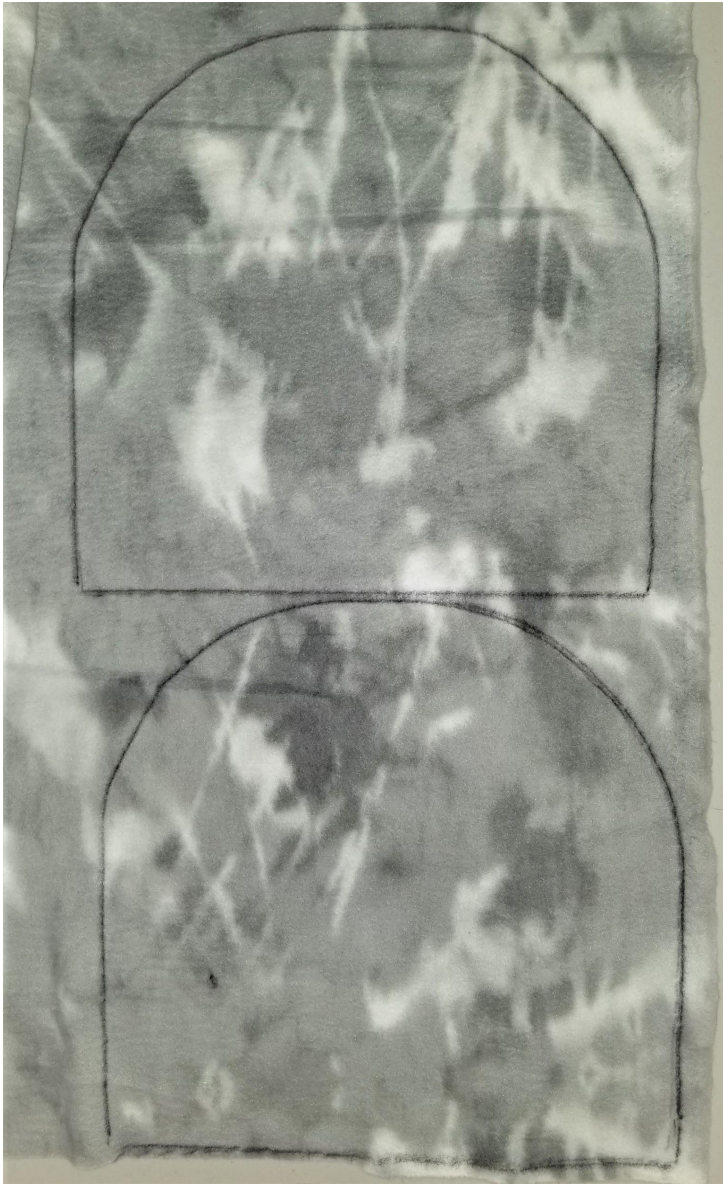
Tip: We suggest making a cardboard template to make tracing the pattern on the fabric easier.



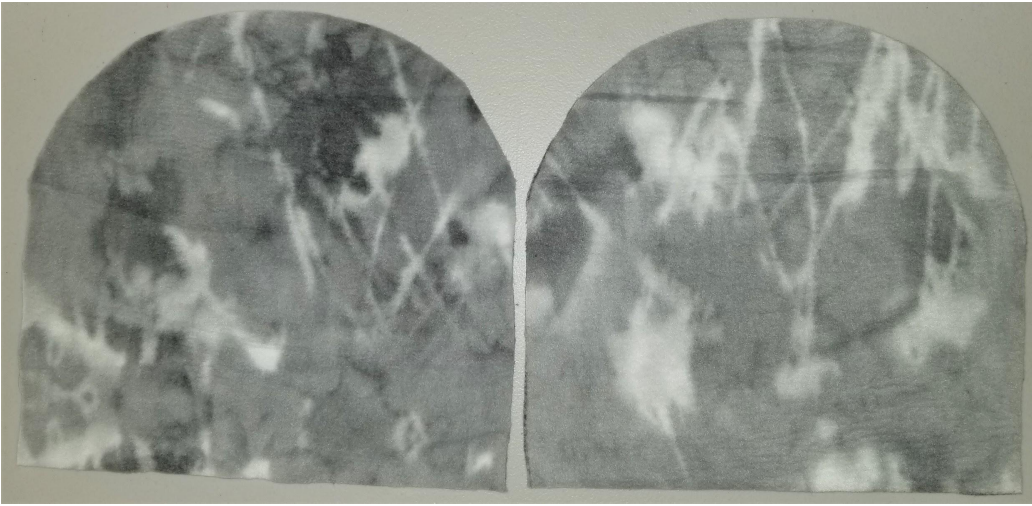
4. Trace the pattern onto your fabric making sure that you are on the “wrong side” of the fleece. Please be sure that the stretch of the fabric is properly aligned with the arrows.

Tip: The pattern should measure approximately 11” across the bottom. If the pattern is laid on the pattern and is not aligned with the stretch, the hat will be too small!

Tip: To determine the “wrong” side versus the “correct” side, stretch the fleece with both hands on the stretchy width. The edge of the fleece will automatically curl down to the wrong side.



5. **Cut out 2 pieces of fleece and place them on top of each other, with the “correct” sides of both pieces are facing each other before sewing.**



6. Sew the outside edges together making sure that all seams are on the wrong side of the fabric.

Tip: This pattern has a $\frac{1}{2}$ " seam allowance.

Do not sew the bottom closed!

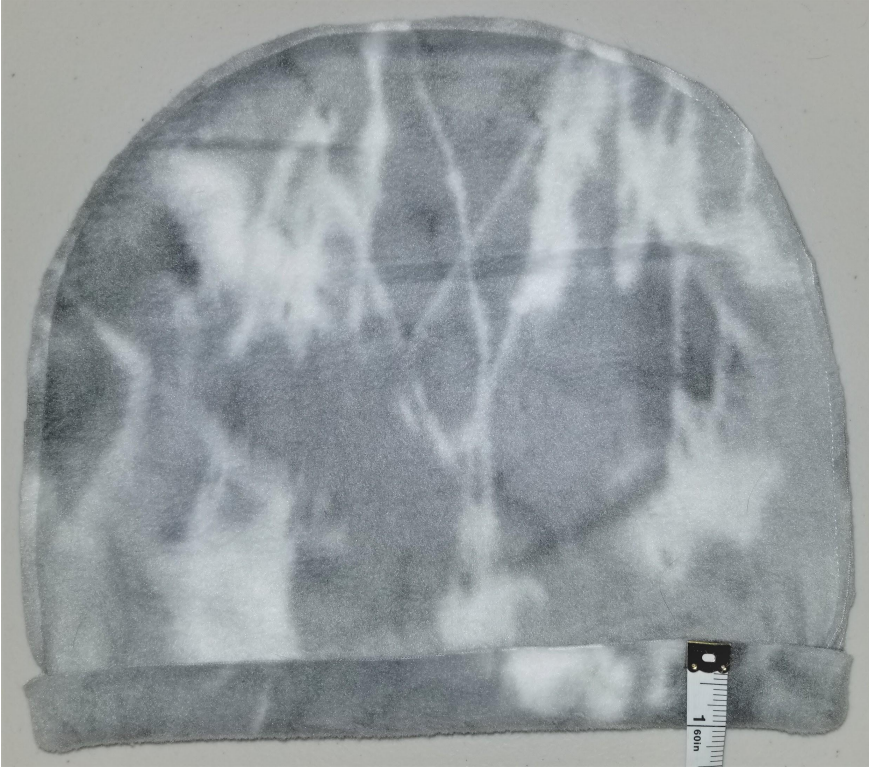


Tip: Trim any excess material from around the edge (trim to $\frac{1}{8}$ ") before folding the bottom up for the hem. This will make sewing the hem much easier and less bulky.

7. Fold the bottom of the hat up to create a 1" hem and sew.

Tip: Be sure that the hem is on the same side as the seam.

Tip: You are welcome to use a blind stitch for the hem but it is not required.



8. Turn the hat inside out and you are done!!

