

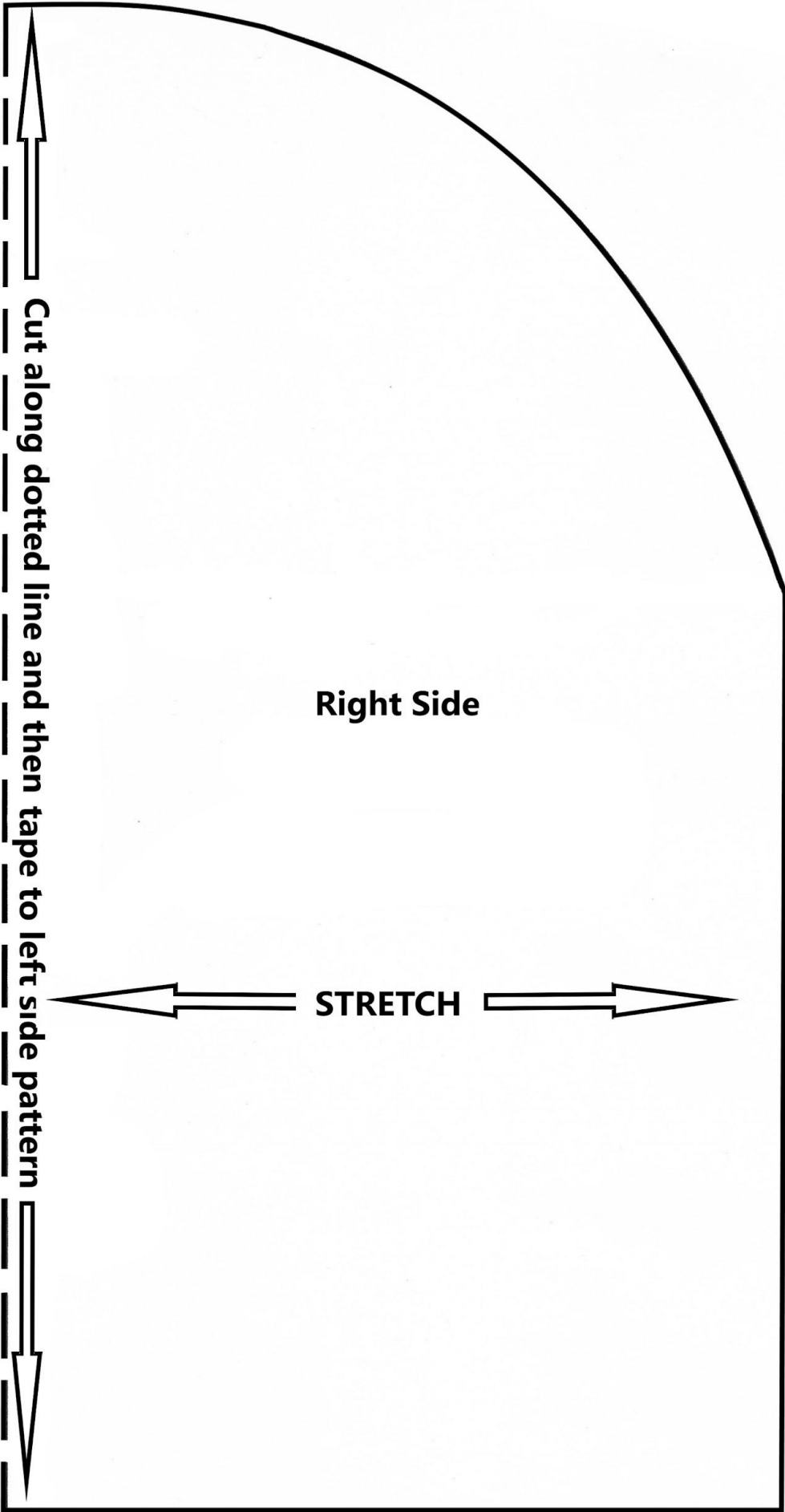


Easy Fleece Hat Pattern

When printing the pattern, please print it as you normally would. If the pattern prints larger than the page, please set your printer to “fit to page” and reprint.

Once combined, the pattern should be 11” wide.

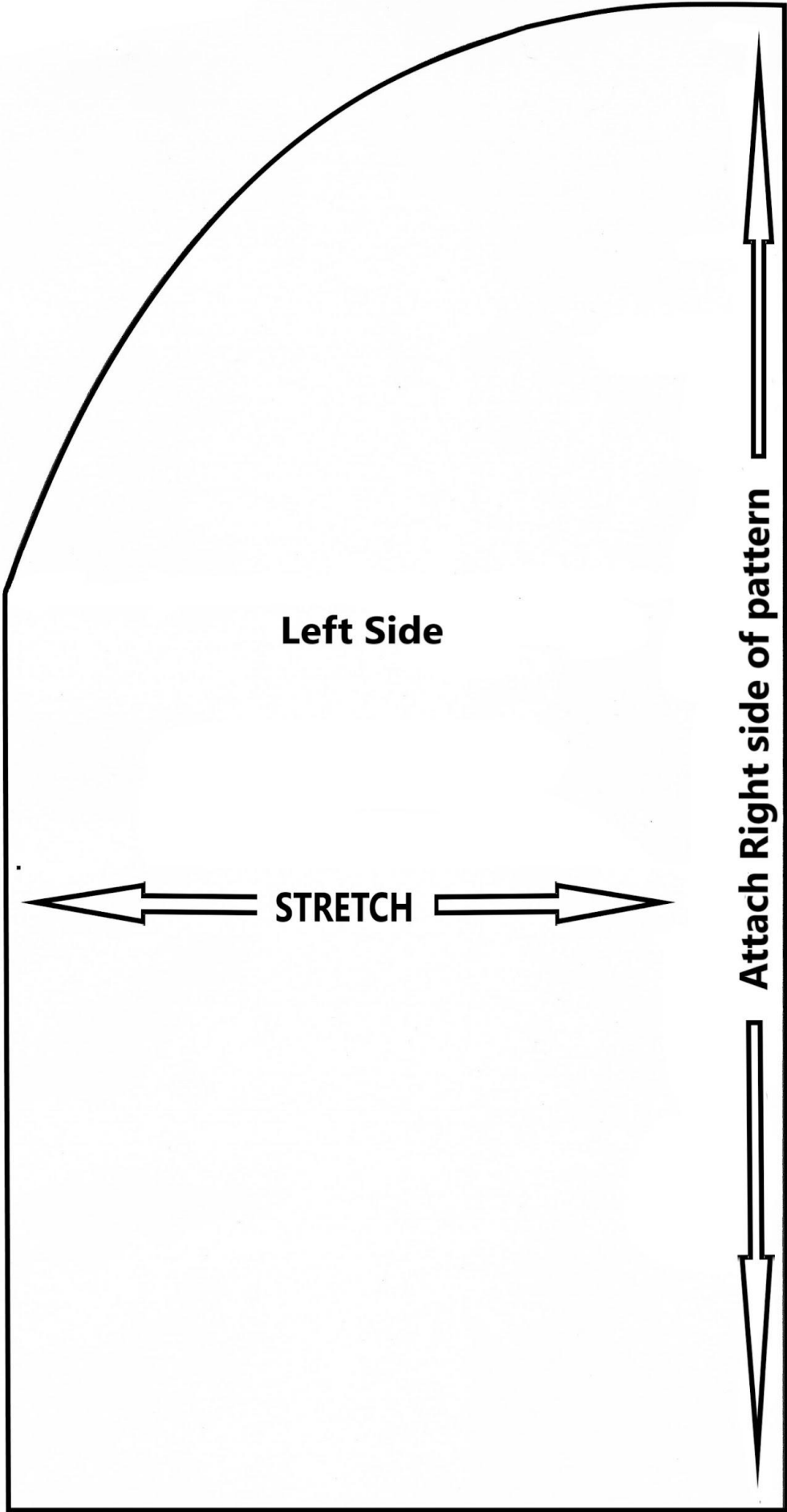
Please remember to place the pattern with the arrows going the same direction as the stretch of your fleece.



Cut along dotted line and then tape to left side pattern

Right Side

STRETCH



Left Side

STRETCH

Attach Right side of pattern