

Easy Fleece Hat

Material Needed:

1 yard of "No Pill Fleece" to make 7 hats

Please choose muted colors such as brown, tan, grey, deep green or military tones, deep blues, deep reds, camo, or patterns that only include these colors. Please do not make neon and overly bright colored items.

Matching thread

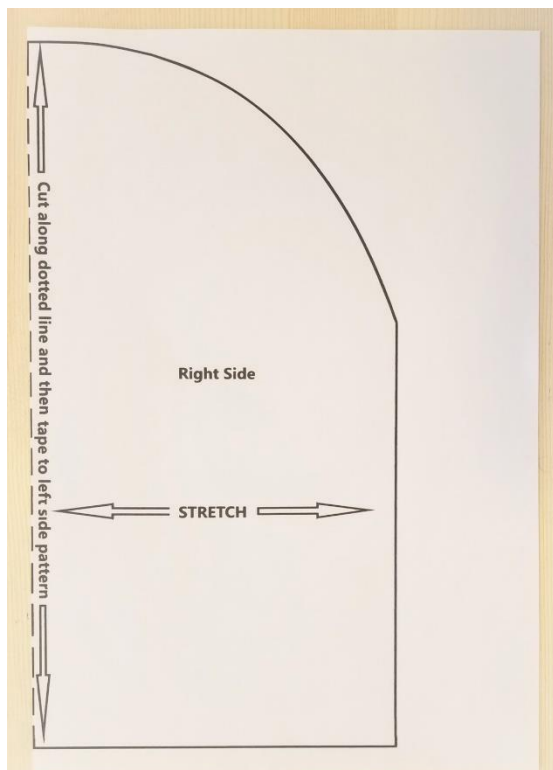
Sharp Scissors

Measuring tape

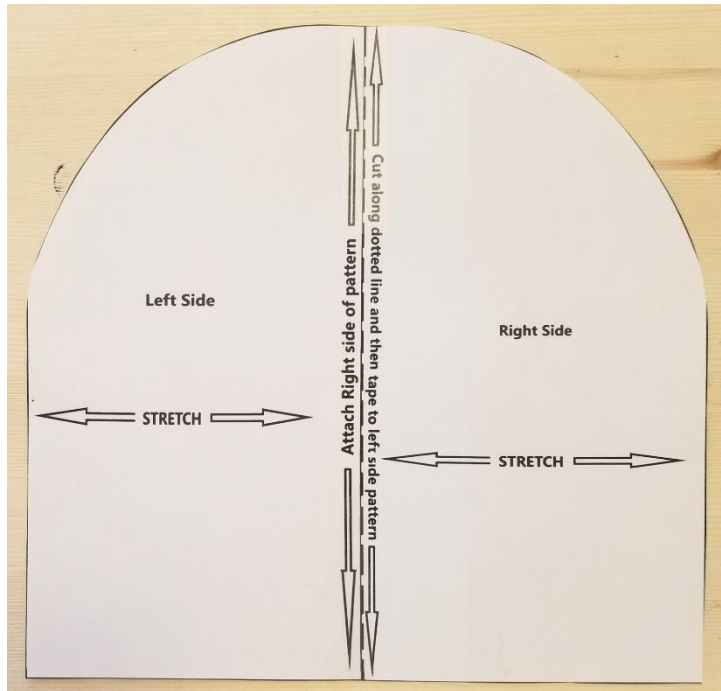
Cloth marker, chalk, or Fine Tip Sharpie for marking your fleece

Pattern (add link)

Print pattern. Make sure to set your printer to "fit to page" or the pattern will not be complete. Trim the "right side" pattern along the dotted line.

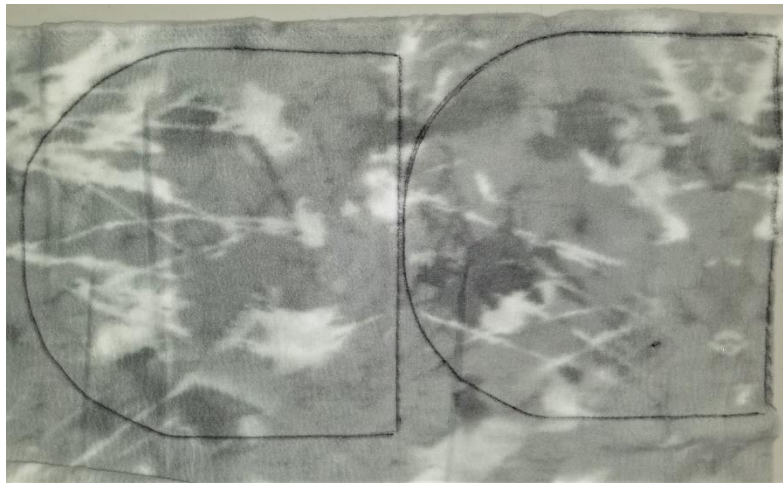


Attach the right to the left by lining up the top and bottom lines and tape the pattern together. Cut out the pattern

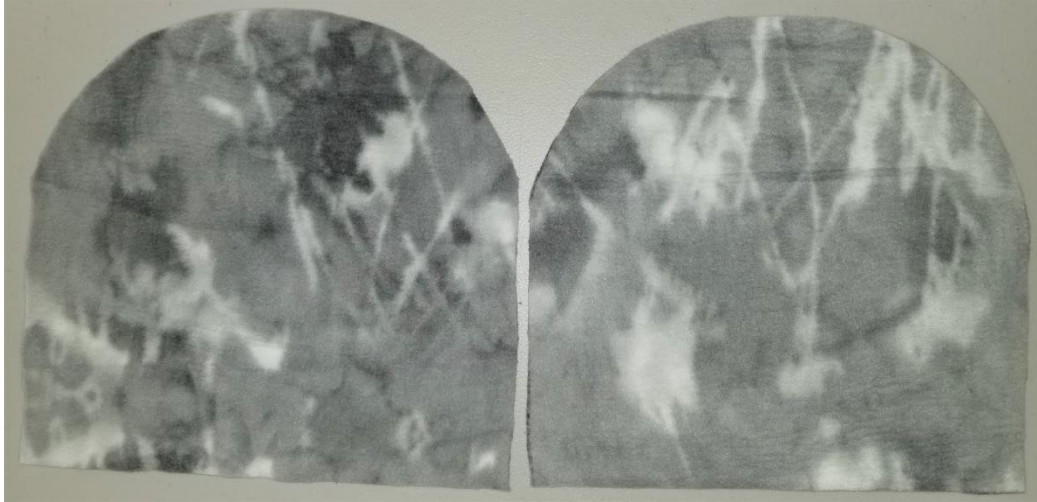


Trace the pattern onto your fabric making sure that you are on the “wrong side” of the fleece and that the stretch of the fabric is properly aligned with the arrows.

Tip: To determine the **wrong side** versus the **correct** side, stretch the fleece with both hands on the stretchy width. The edge of the fleece will automatically curl down to the wrong side.



Cut out 2 pieces of fleece and place them on top of each other. Be sure that the correct sides of both pieces are facing each other.



Sew the outside edges together making sure that all seams are on the wrong side of the fabric.
Do not sew the bottom closed.



Fold the bottom of the hat to create a 1" hem and sew.



Turn the hat inside out and you are done!!

